

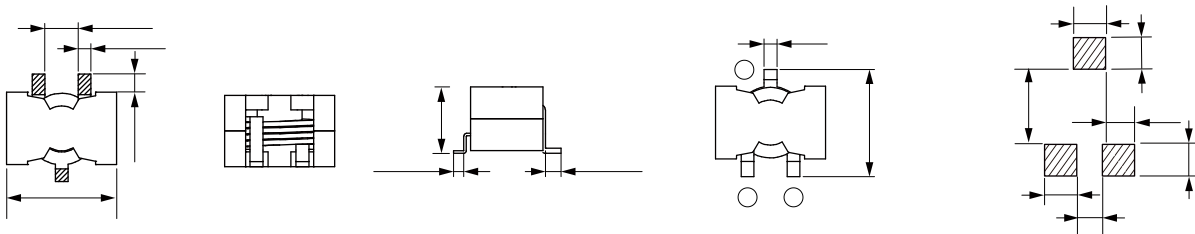
# THCE Series

## CHARACTERISTICS

- High saturation current up to 100A
- Low losses with flat wire design
- Low core losses with Mnzn core material
- Quantity: 100pcs

## APPLICATION

- High current DC/DC converter
- LC filter



	( $\mu\text{H}$ )		Saturation		
			(A)	(A)	(m $\Omega$ )
THCE2015-1R2M	1.2	$\pm 20\%$	65	28	2.3
THCE2015-2R2M	2.2	$\pm 20\%$	55	28	2.3
THCE2015-2R7M	2.7	$\pm 20\%$	48	28	2.3
THCE2015-3R3M	3.3	$\pm 20\%$	48	24	3.8
THCE2015-3R9M	3.9	$\pm 20\%$	36	26	2.3
THCE2015-4R7M	4.7	$\pm 20\%$	35	24	3.8
THCE2015-6R8M	6.8	$\pm 20\%$	29	23	7.3
THCE2015-100M	10	$\pm 20\%$	23	18	7.3
THCE2015-150M	15	$\pm 20\%$	18	16	9.5
THCE2015-220M	22	$\pm 20\%$	13	16	9.5
THCE2015-330M	33	$\pm 20\%$	9	16	9.5

Operating Temperature:  $-40^{\circ}\text{C}$  to  $+125^{\circ}\text{C}$

Temperature Rise Current: the actual value of DC current when the temperature rise is  $T40\text{C}$

Saturation Current that will cause initial inductance to drop approximately 30%

