

MDTA Series

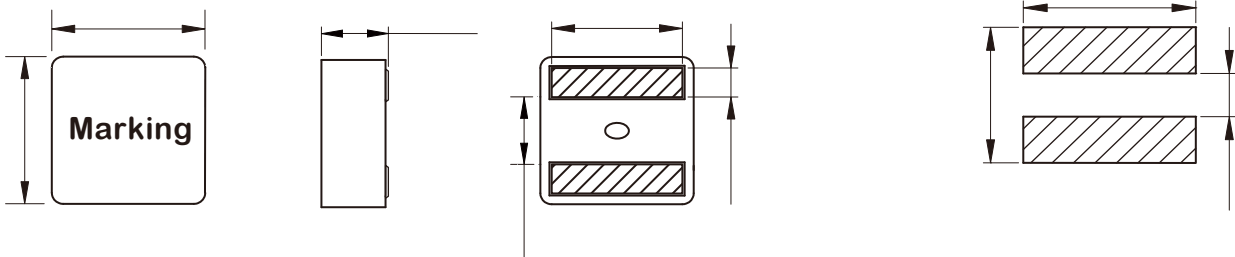


FEATURES

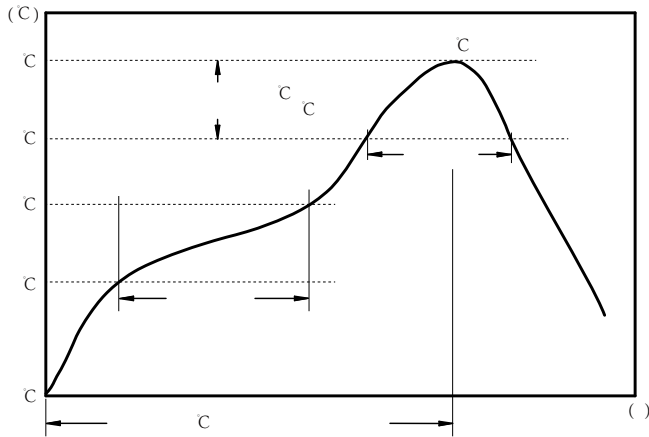
- Flat wire coil for low copper losses
-
-
- High current capacity
- AE
-
-

APPLICATION

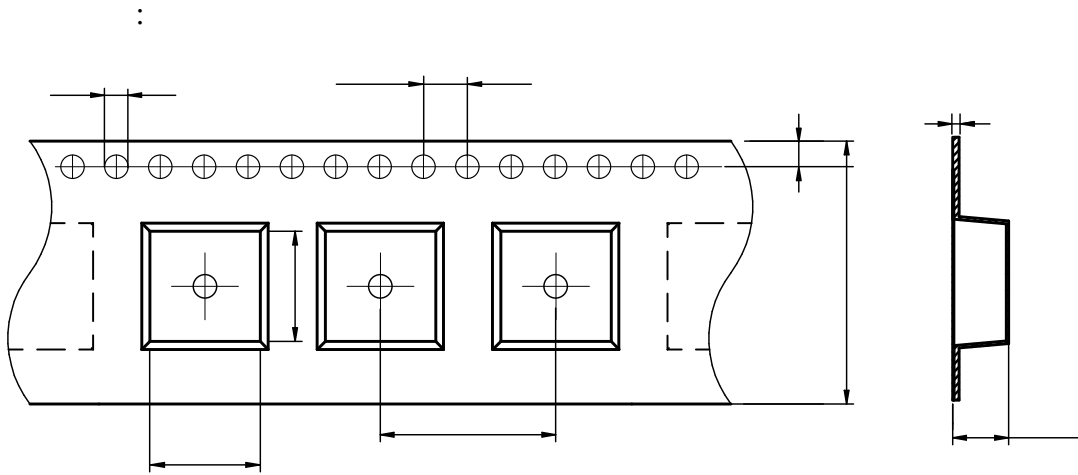
- Noise suppressors for motor wipers / power seats/
-
-



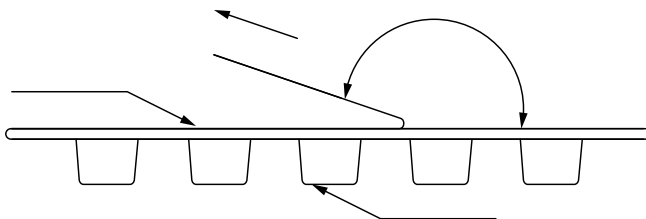
MDTA1030-R28M	0.28	±20%	65.0	25.5	35.0	1.60
MDTA1030-R56M	0.56	±20%	44.0	23.0	32.0	2.75
MDTA1030-R82M	0.82	±20%	38.0	18.0	25.0	4.10
MDTA1030-1R0M	1.00	±20%	35.0	16.0	23.0	4.95
MDTA1030-1R5M	1.50	±20%	30.0	12.0	18.0	6.60



c
c
c



MDTA1030	12.4± 0.1	11.5± 0.1	1.5± 0.1	4.0± 0.1	16.0± 0.1	24.0± 0.3	3.3± 0.1	1.75± 0.1	0.40± 0.05

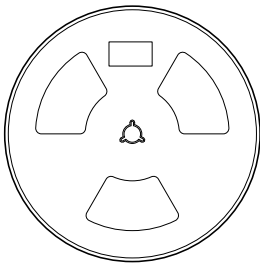
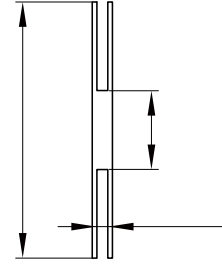
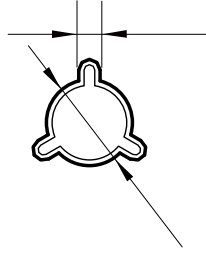
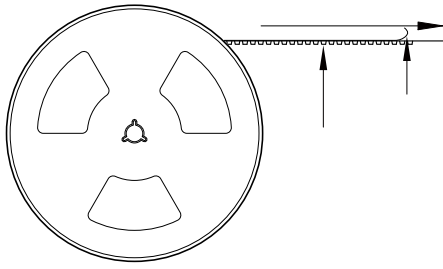


The peel force of top cover tape shall be between 0.1 to 1.3 N

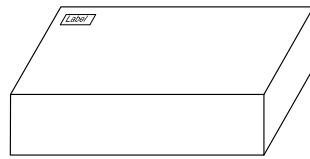
Marking	Printing Inductance)
---------	----------------------



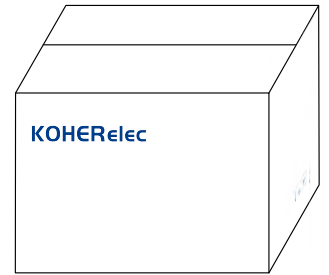
:



1000 Pcs/Reel



2 Reel /Inner box(2000 Pcs)



3 Inner box/Carton box(6K Pcs)

:

-
-
-
-
-
-
-
-
-
-