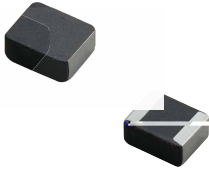


# MDE Series

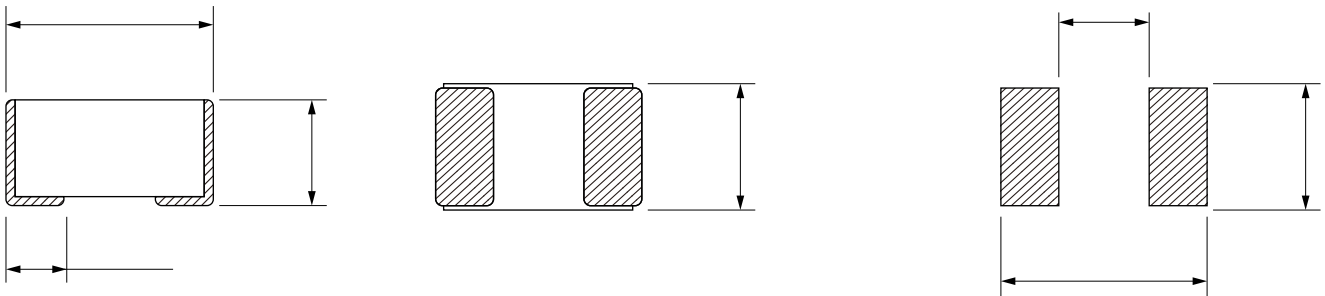


## FEATURES

- 
- 
- 
- 
- 
- 

## APPLICATION

- 
- 
- 
- 



Part No	Inductance @ 1MHz/1V (μH)	Tolerance	DC Resistance Typ. (m )	DC Resistance Max. (m )	Satura on Current Typ. (A)	Satura on Current Max. (A)	Temperature Rise Current Typ. (A)	Temperature Rise Current Max. (A)

