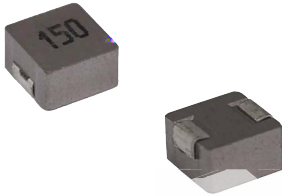
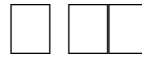
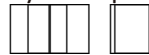




Molding Power Inductors Size 0640

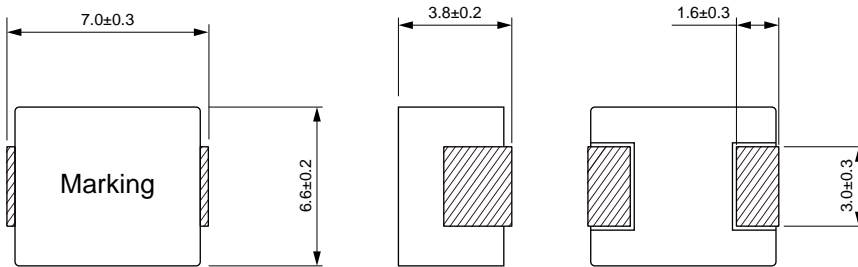


-
-
- $^{\circ}\text{C}$ maximum total temperature operation
-
- Ultra low buzz noise due to molding construction
-
- Operating temperature range $^{\circ}\text{C}$ to $^{\circ}\text{C}$
- Quantity: pcs

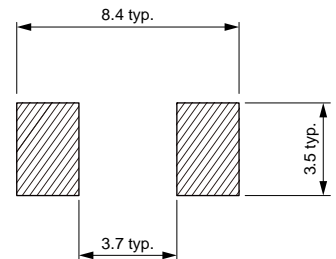


- Laptops and PCs
-
- Base stations
- DC DC converters
- Battery powered devices
-

Dimensions: [mm]



Land Pattern: [mm]



Electrical Properties:

MDE	R M				
MDE	R M				
MDE	R M				
MDE	R M				
MDE	R M				
MDE	R M				
MDE	R M				
MDE	R M				
MDE	M				
MDE	M				
MDE	M				
MDE	M				
MDE	M				

Saturation Current will cause L to drop approximately 30%

Temperature Rise Current: The actual value of DC current when the temperature rise is $\Delta T=40^{\circ}\text{C}$

