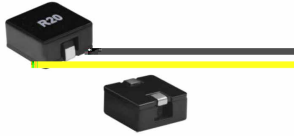


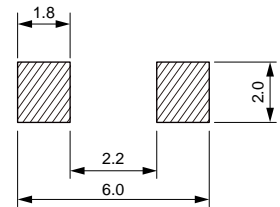
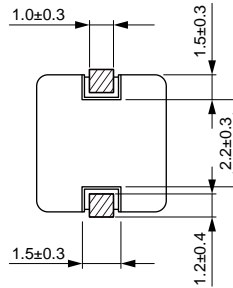
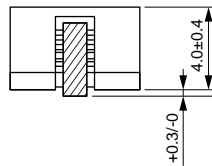
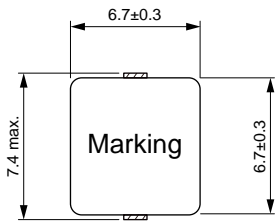
SMD Flat Wire High Current Inductor Size 5040



-
-
-
-
-
-
-

Dimensions: [mm]

Land Pattern: [mm]



Electrical Properties:

Part No	Inductance	Tolerance	Temperature Rise Current	Current	DC Resistance Typ.	DC Resistance Max.

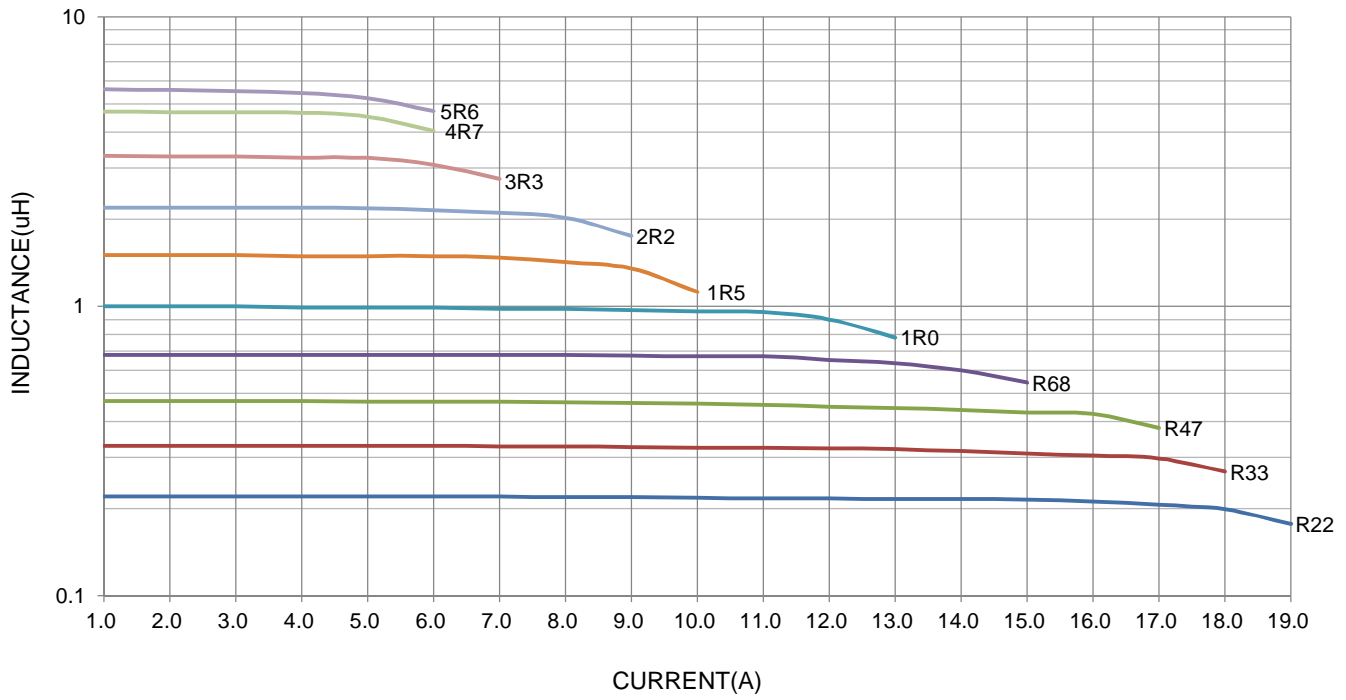
°C

°C

°C

Typical Electrical Characteristics:

Inductance vs Current Characteristics:



Temperature Rise vs Current Characteristics:



CURRENT(A)